



# MAY 2019 NEWSLETTER UPDATE



Hi Everyone, in the Newsletter we added this article (see below) but forgot to mention where to get the forms for you to get started on painting so that you get the approval from the board and you purchase the correct colors.

Here are the home colors that need to be purchased by The Sherwin-Williams store on 580 and 19 the original supplier and our color spec is available and you will get a 10% discount if purchased by yourself.

Original:	Gray Brick	Siding/Stucco:	White Shadow #308 – 36P
Trim:	Mount St. Helens #309 – 18M		
Original:	White Brick	Siding/Stucco:	Mount St. Helens #309 – 18M
Trim:	White Shadow #308 – 36P		
Original:	Red Brick	Siding/Stucco:	Beech #306 – 36P
Trim:	White Shadow #308 – 36P		

You can get the forms you need at <http://cloverplace.org/forms.html>. Look under Architectural Change and then click on Paint to get the form.

NOTE: If you try to purchase the paint elsewhere will not adhere to the specifications above and you may end up having to repaint again with the correct colors above.

- If you are **looking for a painter**, this professional has offered a good deal to our community.

**\*\*\*THE FRONT MUST BE PAINTED TO LOOK COMPLETE. NO SPLITTING DOWN THE MIDDLE.**

**JOE FERNANDEZ, [WWW.EXPERTREMODELING813.COM](http://WWW.EXPERTREMODELING813.COM),**

Joe can offer a discounted price to make arrangements easier for everyone. It will be \$1800 an entire unit price. Each owner can provide \$900 each for labor. That wouldn't include paints, but all of our customers receive a 70% discount from Sherwin Williams on all high quality paints. The estimated cost for paint for each unit as a whole would be around \$350. If both owners agree to have the whole house at the same time, they would split that bill down the middle. Each owner would be responsible for \$1075 each that is including labor and paints for their half.

Each home \*2 units\*  
\$1800 in labor  
\$350 for paints  
Total: \$2150  
Split cost \$1075 each

Price includes:

- Pressure washing
- Minor crack repairs
- Window caulking
- Painting: Exterior doors and garage door, Exterior walls, Exterior soffit and trim

Agreements would all be done in contract and will have a 1 year workmanship warranty from [www.ExpertRemodeling813.com](http://www.ExpertRemodeling813.com) and a 15 year warranty thru Sherwin Williams on all paints.

**Conditions:** Both parties would have to provide payments the day of scheduling up front for half and final payment would be due the day of completion.

**If you are interested, contact Joe at [www.ExpertRemodeling813.com](http://www.ExpertRemodeling813.com) or call Joe at 813-591-5322 and let him know you talked to board member Kathy Curtis from Cloverplace and he'll honor this agreed upon deal.**

For Roofing color specification and forms you can also go to <http://cloverplace.org/forms.html>. Look under Architectural Change and then click on Roof to get the form.

Shingles are GAF Royal Sovereign 3 Tab.

White Brick Homes      Name: "White" (Grayish in Color)

Gray Brick Homes      Name: "White" (Grayish in Color)

Red Brick Homes      Name: "Golden Cedar"

Available at Eagle Supply (727) 938-2886 and Home Depot

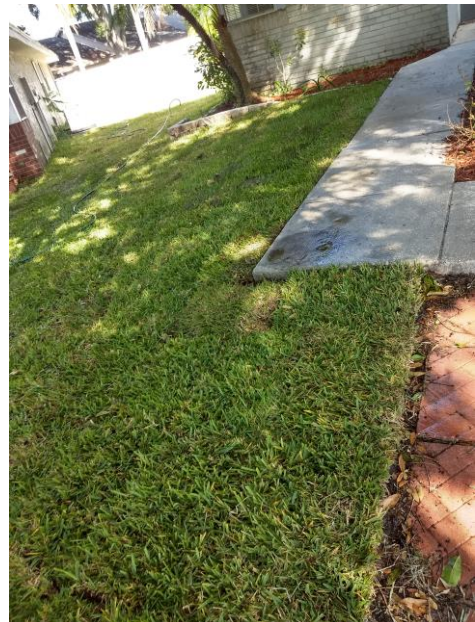
Both vendors have reputable roofers that they may recommend.

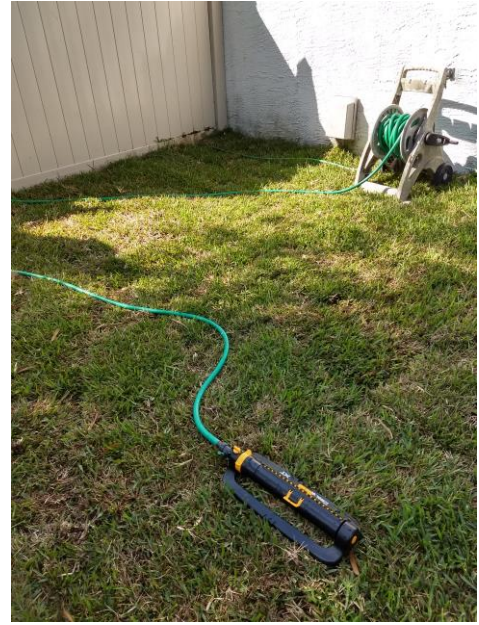
---

## LANDSCAPING RESTORATION UPDATE

I went down to the homes the received their new lawns and took a couple of pictures so everyone could see the results. However, when I was there I ran into Florida Gardens Lawn and Shrub Care and one of the homeowners. They informed me that in order for your new lawns to survive you would also need to get pretreatment, fertilizer and insect, disease and weed control. They are offering their service for \$38.00 and they say that you will have this service for every 6 weeks. I checked on this with David Hennessee to verify if this is true and he told me owners do not need to buy this that this will already be done initially and for 3 weeks the new lawn should be 100% good. If the homeowner would like to get that service after the initial 3 weeks that would be up to the homeowner to take care of it.

Here are the pictures.





As you can see that if you do not water the grass it will start to die. There was notification of that as I took pictures.

---

## CONDOMINIUM DOCUMENTS RULES AND REGULATIONS

For documentation that you should be aware of while living at Cloverplace you can review our Condominium Documents at <http://cloverplace.org/condodocs.html> click on “Cloverplace Condominium Documents” link in the content. To view our updated rules and regulations go here: <http://cloverplace.org/rules.html> click on “Rules and Regulations” link in the content.

---

## Cloverplace.myHoast.com

For more updated news, contracts, documents, go to <http://cloverplace.myhoast.com> for updated information. As we receive the news, we will post it there for homeowners only. Sorry but renters will not get access to this site.